

How To Read Your Water Meter/Remote – Elster Meter/Amco Remote

1. Rural water users can read the remote exactly as it is, including the fixed zeros. (See Figure 1)
2. The remote below reads 54,800 gallons of water used (figure 1). This reading should match the meter, located in the pit,(figure 2) with the exception of the last two digits of course. *(If the readings do not match, contact the NRD).*
3. However, water users need only to report the water used to the 1000 gallons. On the meter and remote, this would be the **first black digit on the white wheel from the right**. In the case of the remote below, that would be the **digit 4** (see figure 1). *(There is no need to read or record the hundredth place digit (8)). DO NOT round up to the nearest thousand gallons. You will be paying for those gallons used in future payments. It may be beneficial to the user to place a piece of tape over that digit to avoid confusion).*
4. The digits outlined in yellow will be the only digits you record in the blank spaces in the pay book. Please write the readings in the pay book each month. Not just the “TOTAL AMOUNT PAID.”
5. Therefore in your pay book, “THIS MONTH’S READING” you would simply write 54. (Figure 3)
6. Let’s say, last month the remote read 52,400. Therefore in your pay book, “LAST MONTH’S READING” you should have written 52. (Figure 3)
7. That leaves a total of 2000 gallons used for the month. (Figure 3)
8. Then, simply refer to the monthly rate schedule for the “Gallons of Water Consumed” for the total amount you pay. (Figure 4)
9. In this example, 2000 gallons would yield a payment of \$53.81. (Figure 3)

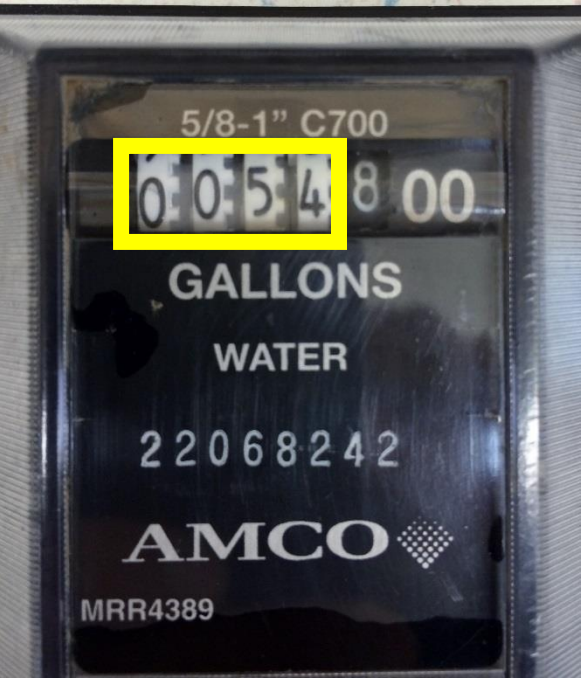


Figure 1

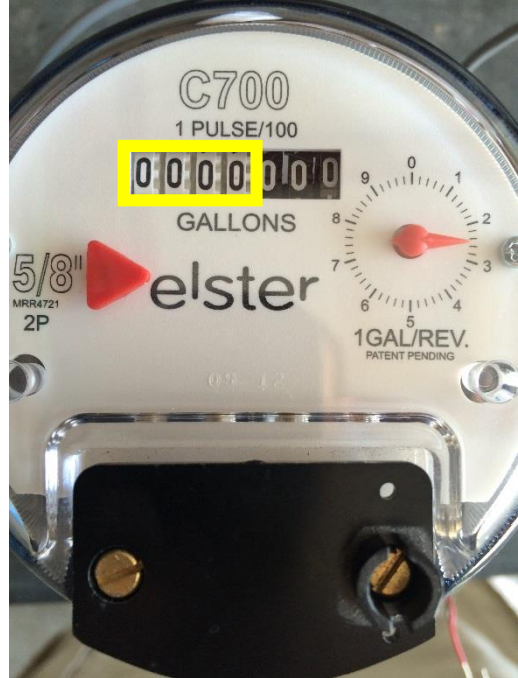


Figure 2

Figure 3

NAME _____ No. _____

ADDRESS _____

DATE _____ THIS MONTH'S READING **54** 0 0 0

LAST MONTH'S READING **52** 0 0 0 0

WATER CONSUMED **2** 0 0 0

AMOUNT FOR WATER (FROM TABLE) \$ _____

SALES TAX (FROM TABLE) \$ _____

DELINQUENT PAYMENT CHARGE \$ _____

OTHER CHARGES \$ _____

CREDIT \$ _____

TOTAL AMOUNT PAID \$ **53.81**

THIS TICKET MUST ACCOMPANY REMITTANCE

Figure 4

MONTHLY RATE SCHEDULE Effective 7/01/13

Gallons Consumed	Water Charge	5.5% Sales Tax	Net Total	Late Charge Amount Due After 15th	Gallons Consumed	Water Charge	5.5% Sales Tax	Net Total	Late Charge Amount Due After 15th
Base Charge	45.00	2.48	47.48	51.98	16000	93.00	5.12	98.12	107.42
1000	48.00	2.64	50.64	55.44	17000	96.00	5.28	101.28	110.68
2000	51.00	2.81	53.81	58.91	18000	99.00	5.45	104.45	114.35
3000	54.00	2.97	56.97	62.37	19000	102.00	5.61	107.61	117.81
4000	57.00	3.14	60.14	65.84	20000	105.00	5.78	110.78	121.28
5000	60.00	3.30	63.30	69.30	21000	108.00	5.94	113.94	124.74
6000	63.00	3.47	66.47	72.77	22000	111.00	6.11	117.11	128.21
7000	66.00	3.63	69.63	76.23	23000	114.00	6.27	120.27	131.67
8000	69.00	3.80	72.80	79.70	24000	117.00	6.44	123.44	135.14
9000	72.00	3.96	75.96	83.16	25000	120.00	6.60	126.60	138.60
10000	75.00	4.13	79.13	86.63	26000	123.00	6.77	129.77	142.07
11000	78.00	4.29	82.29	90.09	27000	126.00	6.93	132.93	145.53
12000	81.00	4.46	85.46	93.56	28000	129.00	7.10	136.10	149.00
13000	84.00	4.62	88.62	97.02	29000	132.00	7.26	139.26	152.46
14000	87.00	4.79	91.79	100.49	30000	135.00	7.43	142.43	155.93
15000	90.00	4.95	94.95	103.95					

How To Read Your Water Meter/Remote – Master Meter/Digital Remote

1. The remote reads with the decimal acting as the 1000th place comma and an assumed zero after the last digit.(See Figure 1)
2. The remote below reads 42,830 gallons of water used (figure 1). This reading should match the meter, located in the pit.(figure 2) *(If the readings do not match, contact the NRD).*
3. However, water users need only to report the water used to the 1000 gallons. On the meter, this would be the **first black digit on the white wheel from the right.** On the remote, this would be the **first digit to the left of the decimal.** In the case of the remote below, that would be the **digit 2** (see figure 1). *(There is no need to read or record the hundredth place digit (8). **DO NOT** round up to the nearest thousand gallons. You will be paying for those gallons used in future payments. It may be beneficial to the user to place a piece of tape over that digit to avoid confusion).*
4. The digits outlined in yellow will be the only digits you record in the blank spaces in the pay book. Please write the readings in the pay book each month. Not just the “TOTAL AMOUNT PAID.”
5. Therefore in your pay book, “THIS MONTH’S READING” you would simply write 42. (Figure 3)
6. Let’s say, last month the remote read 35.26. Therefore in your pay book, “LAST MONTH’S READING” you should have written 35. (Figure 3)
7. That leaves a total of 7000 gallons used for the month. (Figure 3)
8. Then, simply refer to the monthly rate schedule for the “Gallons of Water Consumed” for the total amount you pay. (Figure 4)
9. In this example, 7000 gallons would yield a payment of \$69.63. (Figure 3)



Figure 1



Figure 2

Figure 3

NAME _____ No. _____

ADDRESS _____

DATE _____ THIS MONTH'S READING 42 000

LAST MONTH'S READING 35 000

WATER CONSUMED 7 000

THIS TICKET MUST ACCOMPANY REMITTANCE

AMOUNT FOR WATER (FROM TABLE) \$ _____

SALES TAX (FROM TABLE) \$ _____

DELINQUENT PAYMENT CHARGE \$ _____

OTHER CHARGES \$ _____

CREDIT \$ _____

TOTAL AMOUNT PAID \$ 69.63

Figure 4

MONTHLY RATE SCHEDULE
Effective 7/01/13

Gallons Water Consumed	Water Charge	5.5% Sales Tax	Net Total	Late Charge Amount Due After 15th	Gallons Consumed	Water Charge	5.5% Sales Tax	Net Total	Late Charge Amount Due After 15th
Base Charge	45.00	2.48	47.48	51.98	16000	93.00	5.12	98.12	107.42
1000	48.00	2.64	50.64	55.44	17000	96.00	5.28	101.28	110.88
2000	51.00	2.81	53.81	58.91	18000	99.00	5.45	104.45	114.35
3000	54.00	2.97	56.97	62.37	19000	102.00	5.61	107.61	117.81
4000	57.00	3.14	60.14	65.84	20000	105.00	5.78	110.78	121.28
5000	60.00	3.30	63.30	69.30	21000	108.00	5.94	113.94	124.74
6000	63.00	3.47	66.47	72.77	22000	111.00	6.11	117.11	128.21
7000	66.00	3.63	69.63	76.23	23000	114.00	6.27	120.27	131.67
8000	69.00	3.80	72.80	79.70	24000	117.00	6.44	123.44	135.14
9000	72.00	3.96	75.96	83.16	25000	120.00	6.60	126.60	138.60
10000	75.00	4.13	79.13	86.63	26000	123.00	6.77	129.77	142.07
11000	78.00	4.29	82.29	90.09	27000	126.00	6.93	132.93	145.53
12000	81.00	4.46	85.46	93.56	28000	129.00	7.10	136.10	149.00
13000	84.00	4.62	88.62	97.02	29000	132.00	7.26	139.26	152.46
14000	87.00	4.79	91.79	100.49	30000	135.00	7.43	142.43	155.93
15000	90.00	4.95	94.95	103.95					